

RockTech WM (Wired Mats) Series

General Product Information

ROCKWOOL stone wool products are made of basalt, a volcanic stone.

ROCKWOOL stone wool products are non-combustible with a melting point of approximately 1000°C. They are particularly suitable for thermal insulation, fire protection and sound reduction/absorption.

ROCKWOOL stone wool is inorganic and contains no nutritious substance. Therefore it will not be attacked by microorganisms. Stone wool will not rot and does not attract vermin.

No CFCs, HFCs, HCFCs, or asbestos are used in the manufacture of ROCKWOOL stone wool products.

RockTech WM (Wired Mats)



Common applications

RockTech WM is particularly suited to meet the specification requirements of thermal insulation, fire protection and sound attenuation of large process pipework, tanks, vessels, boilers and ducts. RockTech WM is suitable where high temperature combined with vibrations or high fire resistance is required. Irregular and circular shapes of equipment can be easily insulated by RockTech WM due to its flexibility nature of blanket type. Retention of the fibres by the 25mm (1") wire mesh prevents any cracking or breaking. Wire mesh can be made from either galvanized steel or stainless steel materials.

Basic installation guideline

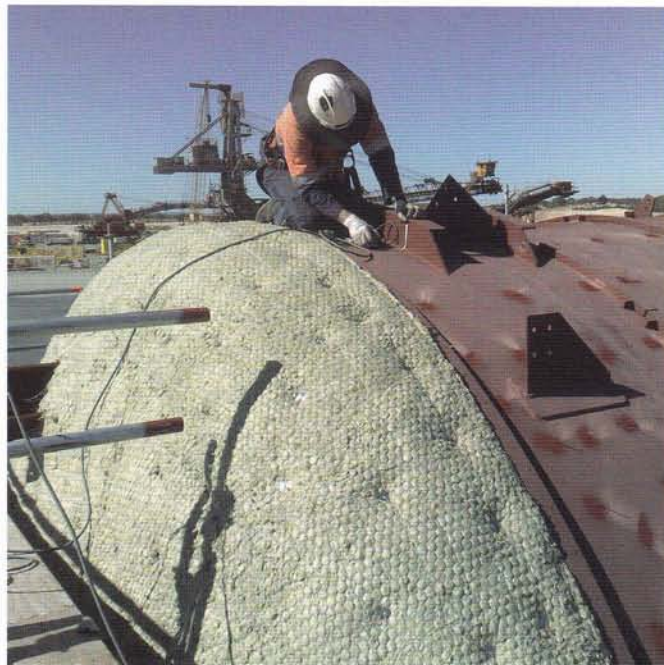
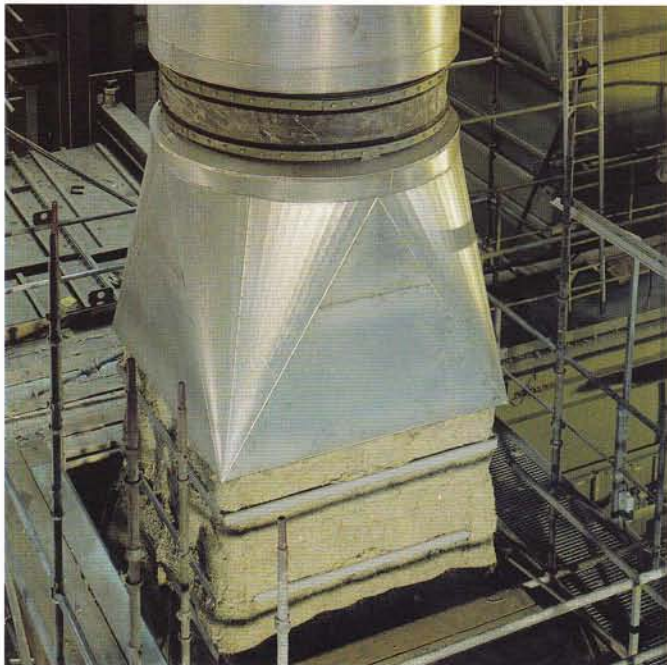
RockTech WM can be cut to required length and wrapped tightly around the equipment. The edges of each mattress should be butt jointed closely together with an angle of at least 30 degrees to each other to eliminate gaps and stitched

using steel wire of diameter minimum 0.5mm. RockTech WM can be secured to the equipment with steel bands or pins with speed clips. All steel components or equipment exposed to a corrosive environment should be cleaned, degreased and coated with a protective finish before insulation is installed into it. The insulation should be finished with metal cladding i.e. aluminum or other approved cladding material. Both lengthwise and circular joints of the cladding are fastened with sheet metal screws or rivets. All the connections within the cladding shall be made watertight using suitable sealant.

Packaging and storage

RockTech WM is shrink-wrapped in polyethylene sheets or cling wrap for ease of handling, transportation, storage and identification. Products should be stored indoors or under a waterproof covering. Ensure the insulation is not in direct contact with the floor; otherwise it may become wet as a result of ground moisture.

RockTech WM (Wired Mats)



Dimensions and densities*

Standard width: 1000mm

Product type	Nominal density (kg/m³)	Length	Thickness (mm)									
			25	30	40	50	60	70	75	80	90	100
WM450	80	m	-	-	6.0	5.0	4.0	4.0	2.5	2.5	2.5	2.5
WM650	100	m	6.0	6.0	5.0	5.0	4.0	2.5	2.5	2.5	2.5	2.5
WM650 HD	128	m	5.0	5.0	4.0	4.0	2.5	2.0	2.0	2.0	-	-

Standard width: 600mm

Product type	Nominal density (kg/m³)	Length	Thickness (mm)									
			25	30	40	50	60	70	75	80	90	100
WM450	80	m	-	-	6.0	5.0	4.0	4.0	4.0	3.0	3.0	3.0
WM650	100	m	8.0	8.0	6.0	5.0	4.0	4.0	4.0	3.0	3.0	3.0
WM650 HD	128	m	8.0	8.0	6.0	4.0	3.0	3.0	3.0	3.0	-	-

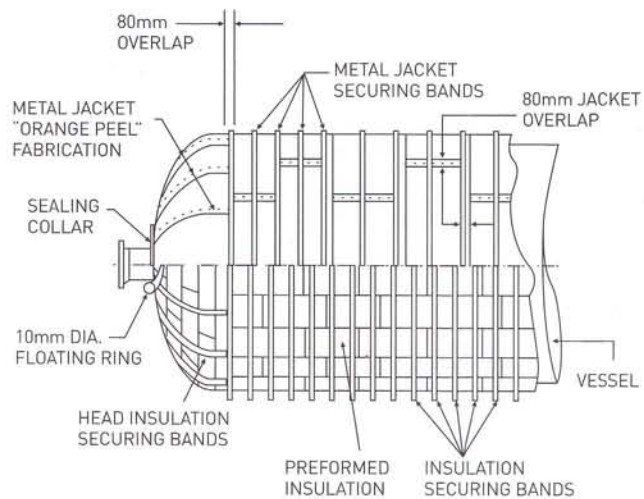
Note: Above densities and sizes are based upon the production capabilities of the Melaka manufacturing plant. For other manufacturing plant's production capabilities on sizes and densities, please refer to your local sales representative.

RockTech WM (Wired Mats)

Technical Parameters

	WM450	WM650	WM650HD	Standards
Density	80kg/m ³	100kg/m ³	128kg/m ³	EN1602
Thermal Conductivity				ASTM C335
50°C	0.038W/mK	0.038W/mK	0.039W/mK	
100°C	0.045W/mK	0.045W/mK	0.045W/mK	
150°C	0.054W/mK	0.053W/mK	0.053W/mK	
200°C	0.062W/mK	0.058W/mK	0.057W/mK	
250°C	0.074W/mK	0.069W/mK	0.066W/mK	
300°C		0.081W/mK	0.078W/mK	
350°C		0.094W/mK	0.089W/mK	
Hot Surface Performance	450°C	650°C	750°C	ASTM C411 / ASTM C447
Linear shrinkage, max % at maximum use temperature	0.2%	0.4%	3.5%	ASTM C356
Surface Burning Characteristic				ASTM E84
FSI	0	0	0	
SD	20	20	20	
Water Absorption (partial immersion)	<1kg/m ²	<1kg/m ²	<1kg/m ²	EN1609 / BS 2972
Water Vapor Sorption	≤0.5% by weight	≤0.4% by weight	≤0.2% by weight	ASTM C1104
Corrosion to stainless steel	Conforms to the stainless steel corrosion specification as per ASTM C692 and C871 test method			ASTM C692 / ASTM C795
Health & Safety:				
Odor Emission	No perceptible odour present			ASTM C665-06
Fungi Resistance	Does not encourage growth of fungi			ASTM C1338
Compliance to Standard	ASTM C592 "Standard specification for mineral fibre blanket insulation pipe insulation" Type I & III			

Note: ROCKWOOL is able to produce products in low chloride content, please consult your local sales or technical representatives for further details.



www.rockwoolasia.com

ROCKWOOL Malaysia Sdn Bhd
Lot 4, Solok Waja 1
Bukit Raja Industrial Estate
41050 Klang, Selangor
Malaysia
T (+60) 3 3341 3444
F (+60) 3 3342 7290

ROCKWOOL Malaysia Sdn Bhd
175 A&B
Kawasan Perindustrian
Air Keroh, Jalan Lingkungan
Usaha, 75450 Melaka
Malaysia
T (+60) 6 233 2010
F (+60) 6 233 2012

ROCKWOOL (Thailand) Limited
Hemaraj Eastern Industrial
Estate (Map Ta Phut)
1 Soi G 2, Pakornsongkrohraj
Road, Huaypong, Muang
Rayong 21150
Thailand
T (+66) 3868 5110
F (+66) 3868 4938

Disclaimer: The information contained in this data sheet is believed to be correct at the date of publication. ROCKWOOL does not accept responsibility for the consequences of using RockTech WM in applications different from those described above.